



KNIT
SKILL LEVEL
EASY

Designed by Laura Bain



What you will need:

RED HEART® With Love®: 1 skein each of 1012 Black A, and 1546 Iris B

Susan Bates® Knitting Needles: 5.5mm [US 9] 16" (40.5 cm) circular needle, and set of double pointed needles

Stitch marker, yarn needle

GAUGE: 16 sts = 4" (10 cm); 21 rounds = 4" (10 cm) in Stockinette stitch (knit every round). **CHECK YOUR GAUGE.** Use any size needles to obtain the gauge.



RED HEART® With Love®, Art. E400 available in solid color 7 oz (198 g), 390 yd (357 m) and multicolor 5 oz (141 g), 230 yd (211 m) skeins

Bat on a Hat

You'll knit this spooky themed hat for that up-coming Halloween bash, but then love it so much you'll keep wearing it. Bat is added after knitting using a Duplicate Stitch technique.

Hat measures 20 (22)" (51 (56) cm) circumference and will stretch to fit a range of sizes.

Notes

1. Hat is worked in rounds, beginning at the lower edge.
2. Work begins on circular needle. When stitches no longer fit comfortably on circular needle, change to double pointed needles.
3. Bat is worked with duplicate stitch on finished hat.

HAT

Ribbing

With circular needle and **A**, cast on 80 (88) sts.

Round 1 (right side): *K2, p2; repeat from * around.

Place marker for beginning of round and prepare to work in rounds.

Repeat Round 1 until piece measures about 1¼" (3 cm) from beginning.

Body

Work in Stockinette stitch (knit every round) until piece measures about 5½" (14 cm) from beginning.

Shape Crown

Note: When stitches no longer fit comfortably on circular needle, change to double pointed needles.

Round 1: *K6, k2tog; repeat from * around—70 (77) sts.

Round 2: Knit.

Round 3: *K5, k2tog; repeat from * around—60 (66) sts.

Round 4: Knit.

Round 5: *K4, k2tog; repeat from * around—50 (55) sts.

Round 6: Knit.

Round 7: *K3, k2tog; repeat from * around—40 (44) sts.

Round 8: Knit.

Round 9: *K2, k2tog; repeat from * around—30 (33) sts.

Round 10: Knit.

Round 11: *K1, k2tog; repeat from * around—20 (22) sts.

Round 12: Knit.

Round 13: *K2tog; repeat from * around—10 (11) sts.

Cut yarn, leaving a long tail. With yarn needle, thread tail through remaining stitches twice, removing stitches from needle. Pull tightly on tail to close top opening. Weave in tail securely on wrong side (inside) of Hat.

FINISHING

Duplicate Stitch Bat

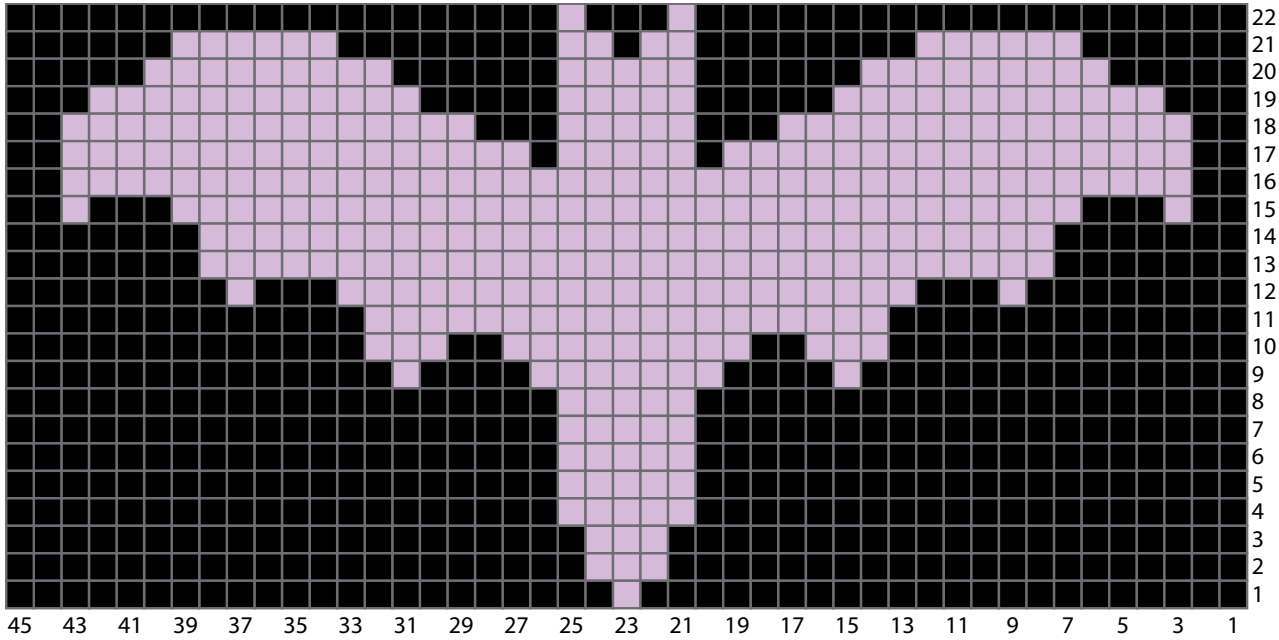
With **B**, work bat with duplicate stitch onto hat according to chart, beginning immediately above the ribbing. Weave in ends.

ABBREVIATIONS

A and B = Color A, and Color B; **k** = knit; **k2tog** = knit next 2 sts together; **p** = purl; **st(s)** = stitch(es); * = repeat whatever follows the * as indicated.

See chart on next page...

SHOP KIT



- Stockinette stitch hat worked with #1012 Black (A)
- Duplicate stitch worked with #1546 Iris (B)