



ABBREVIATIONS:

Alt = Alternate(ing)

Beg = Begin(ning)

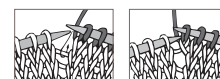
Dec = Decrease (ing)

Inc = Increase(ing)

K = Knit

K2tog = Knit next 2 stitches together

M1K = Make 1 stitch by picking up horizontal loop lying before next stitch and knitting into back of loop



M1P = Make 1 stitch by picking up horizontal loop lying before next stitch and purling into back of loop

P = Purl

P2tog = Purl next 2 stitches together

Pat = Pattern

Rem = Remain(ing)

Rep = Repeat

Rnd = Round

RS = Right side

Ssk = Slip next 2 stitches one at a time. Pass them back onto left-hand needle, then knit through the back loops together.

St(s) = Stitch(es)

Tog = Together

WS = Wrong side

KNIT | SKILL LEVEL: INTERMEDIATE

SIZES

To fit bust measurement

XS/S/M 28-38" [71-96.5 cm]

L/XL 40-48" [101.5-117]

2/5 XL 50-62" [127-157.5 cm]

GAUGE

19 sts and 25 rows = 4" [10 cm] in stocking st.

INSTRUCTIONS

The instructions are written for smallest size. If changes are necessary for larger size(s) the instructions will be written thus (). Numbers for each size are shown in the same color throughout the pattern. When only one number is given in black, it applies to all sizes.

MATERIALS

Caron® Simply Soft® Tweeds™ (5 oz/141 g, 250 yds/228 m)

Sizes	XS/S/M	L/XL	2/5XL	
Gray Heather Tweeds (23002)	5	7	9	balls

Size U.S. 7 (4.5 mm) knitting needles. Size U.S. 7 (4.5 mm) circular knitting needles 29" [74 cm] and 16" [40.5 cm] long **or size needed to obtain gauge.** Stitch markers.

BACK and FRONT (make alike)
Cast on **44 (52-60)** sts. See Chart I on page 4.

1st row: (RS). *K1. P1. Rep from * to end of row.

2nd row: *K1. P1. Rep from * to end of row.

3rd row: (RS). (Inc row). Cast on 2 sts, *using cable method* – c-m. Work Chart to end of row. Cast on 2 sts, *using thumb method* – t-m. **48 (56-64)** sts.

4th and alt rows: Knit all knit sts and purl all purl sts as they appear.

5th row: (Inc row). Cast on 2 sts (c-m). Work chart to end of row. Cast on 2 sts (t-m). **52 (60-68)** sts.

7th row: As 5th row. **56 (64-72)** sts.

8th row: As 4th row.

9th to 16th rows: As 1st to 8th rows. **72 (80-88)** sts after last inc.

17th row: (Inc row). P1. M1K. *P1. K1. Rep from * to last st. M1P. K1. **74 (82-90)** sts.

19th row: (Inc row). K1. M1K. *P1. K3. Rep from * to last st. M1P. K1. **76 (84-92)** sts.

20th row: As 4th row.

21st to 48th rows: As 17th to 20th rows 7 times more. **104 (112-120)** sts after last inc.

49th row: *K1. P1. Rep from * to end of row.

50th row: As 4th row.

51st row: *P1. K3. Rep from * to end of row.

52nd row: As 4th row.

53rd to 56th rows: As 17th to 20th rows. **108 (116-124)** sts after last inc.

57th to 60th rows: As 49th to 52nd rows.

Place marker at each end of last row.

Shape raglans: 1st row: (RS - dec row). K2. K2tog. *K1. P1. Rep from * to last 4 sts. ssk. K2. **106 (114-122)** sts rem.

2nd and alt rows: P3. Knit all knit sts and purl all purl sts as they appear to last 4 sts. P4.

3rd row: *K3. P1. Rep from * to last 6 sts. K6.

5th row: (dec row). K2. K2tog. *P1. K1. Rep from * to last 4 sts. ssk. K2. **104 (112-120)** sts rem.

7th row: K3. *K1. P1. K2. Rep from * to last st. K1.

9th row: (dec row). As 1st row. **102 (110-118)** sts rem.

11th row: (dec row). K2. K2tog. *K1. P1. K2. Rep from * to last 6 sts. K1. P1. ssk. K2. **100 (108-116)** sts rem.

13th row: (dec row). K2. K2tog. *K1. P1. Rep from * to last 4 sts. ssk. K2. **98 (106-114)** sts rem.

14th row: As 2nd row.

15th to 82nd rows: Rep 11th to 14th rows 17 times more. **30 (38-46)** sts after last dec.

83rd row: (Dec row). As 11th row. **28 (36-44)** sts.

85th row: K4. *K1. P1. Rep from * to last 4 sts. K4.

86th row: As 2nd row. Cast off.

Lower Ribbing:

With RS facing and longer circular needle, pick up and knit **155 (163-171)** sts along lower edge between markers. **Do not** join.

Working back and forth across needle in rows, proceed as follows:

1st row: (WS). *P1. K1. Rep from * to last st. P1.

2nd row: *K1. K1. Rep from * to last st. K1.

Last 2 rows form (K1. P1) ribbing. Work a further 9 rows in (K1. P1) ribbing. Cast off in ribbing.

SLEEVES

Cast on **40 (40-48)** sts.

1st row: (RS). *P1. K1. Rep from * to end of row.

Rep last row of (K1. P1) ribbing 24 times more, ending on a RS row.

Proceed as follows:

Foundation row: (WS). *P1. (P1. K1) in next st. Rep from * to end of row. **60 (60-68)** sts.

See Chart II on page 5.

1st row: (RS - inc row). K1. M1P. *K1. P1. Rep from * to last st. M1K. P1. **62 (62-70)** sts.

2nd and alt rows: Knit all knit sts and purl all purl sts as they appear.

3rd row: (inc row). K1. M1K. *K1. P1. K2. Rep from * to last st. M1K. P1. **64 (64-72)** sts.

5th row: As 1st row.

7th to 26th rows: As 3rd to 6th rows 4 times more. **86 (86-94)** sts after last inc.

27th to 36th rows: Work even in pat.

Shape raglan: 1st row: (RS). Cast off 5 sts. *P1. K1. Rep from * to last st. P1. **81 (81-89)** sts.

2nd row: Cast off 5 sts. Knit all knit sts and purl all purl sts as they appear to last 4 sts. P4. **76 (76-84)** sts.

3rd row: *K3. P1. Rep from * to last 4 sts. K4.

4th and alt rows: P4. Knit all knit sts and purl all purl sts as they appear to last 4 sts. P4.

5th row: (RS - dec row). K2. K2tog. *P1. K1. Rep from * to last 4 sts. ssk. K2. **74 (74-82)** sts rem.

7th row: K4. *P1. K3. Rep from * to last 2 sts. K2.

9th row: (RS - dec row). K2. K2tog. *K1. P1. Rep from * to last 4 sts. ssk. K2. **72 (72-80)** sts rem.

11th row: K2. *K3. P1. Rep from * to last 6 sts. K6.

13th row: (RS - dec row). K2. K2tog. *P1. K1. Rep from * to last 4 sts. ssk. K2. **70 (70-78)** sts rem.

15th row: K3. *K3. P1. Rep from * to last 3 sts. K3.

17th row: (RS - dec row). K2. K2tog. *K1. P1. Rep from * to last 4 sts. ssk. K2. **68 (68-76)** sts rem.

19th to 50th rows: Rep 3rd to 18th rows twice more. **52 (52-60)** sts after last dec.

51st to 54th rows: As 3rd to 6th rows. **50 (50-58)** sts rem.

55th row: (RS - dec row). K2. K2tog. *P1. K3. Rep from * to last 6 sts. P1. K1. ssk. K2. **48 (48-56)** sts rem.

57th row: (RS - dec row). K2. K2tog. *P1. K1. Rep from * to last 4 sts. ssk. K2. **46 (46-54)** sts rem.

59th to 86th rows: Rep 55th to 58th rows 7 times more. **18 (18-26)** sts rem.

Cast off, placing marker at center of cast off edge of Left Sleeve.

FINISHING

Sew sleeve seams. Overlap Lower Ribbing at underarm and sew sides tog. Sew raglan seams.

Neck edging: With RS facing, shorter circular needle and beg at marker on cast off edge of Left Sleeve, pick up and knit **9 (9-13)** sts across cast off edge to raglan seam, **30 (38-46)** sts across Front neck edge, **18 (18-26)** sts across cast off edge of Right Sleeve, **30 (38-46)** sts across Back neck edge and **9 (9-13)** sts across cast off edge of Left Sleeve to marker. **96 (112-144)** sts. Join in rnd, placing marker on first st.

1st rnd: (K1. P1) **4 (4-6)** times. K2tog (raglan). (P1. K1) **14 (18-22)** times. P2tog (raglan). (K1. P1) **8 (8-13)** times. K2tog (raglan). (P1. K1) **14 (18-22)** times. P2tog (raglan). (K1. P1) **4 (4-6)** times. **92 (108-140)** sts rem.

2nd to 5th rnds: *K1. P1. Rep from * around. Cast off in ribbing.

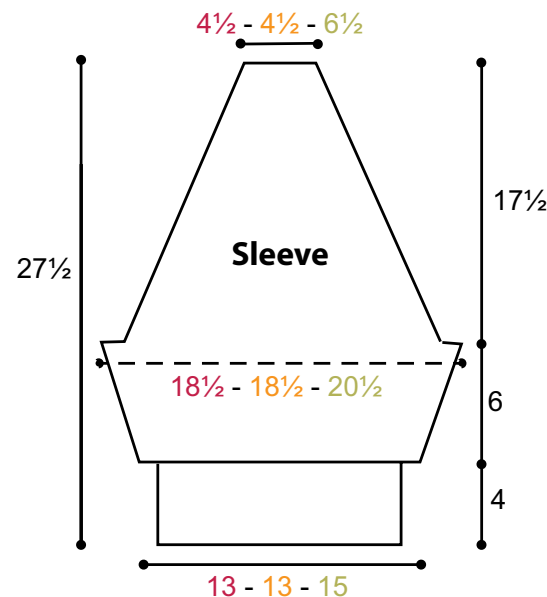
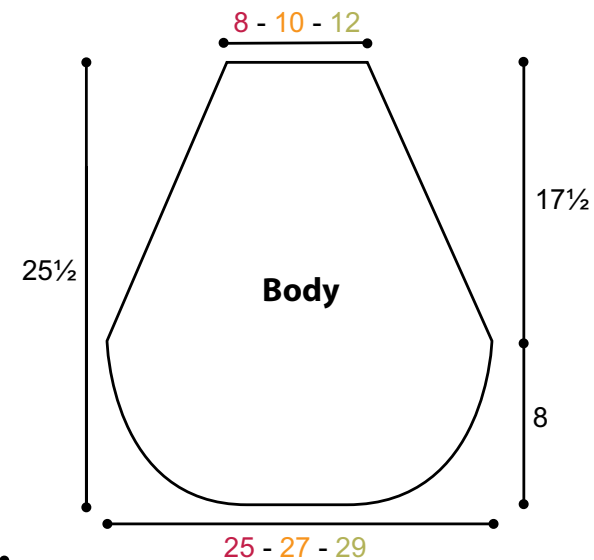
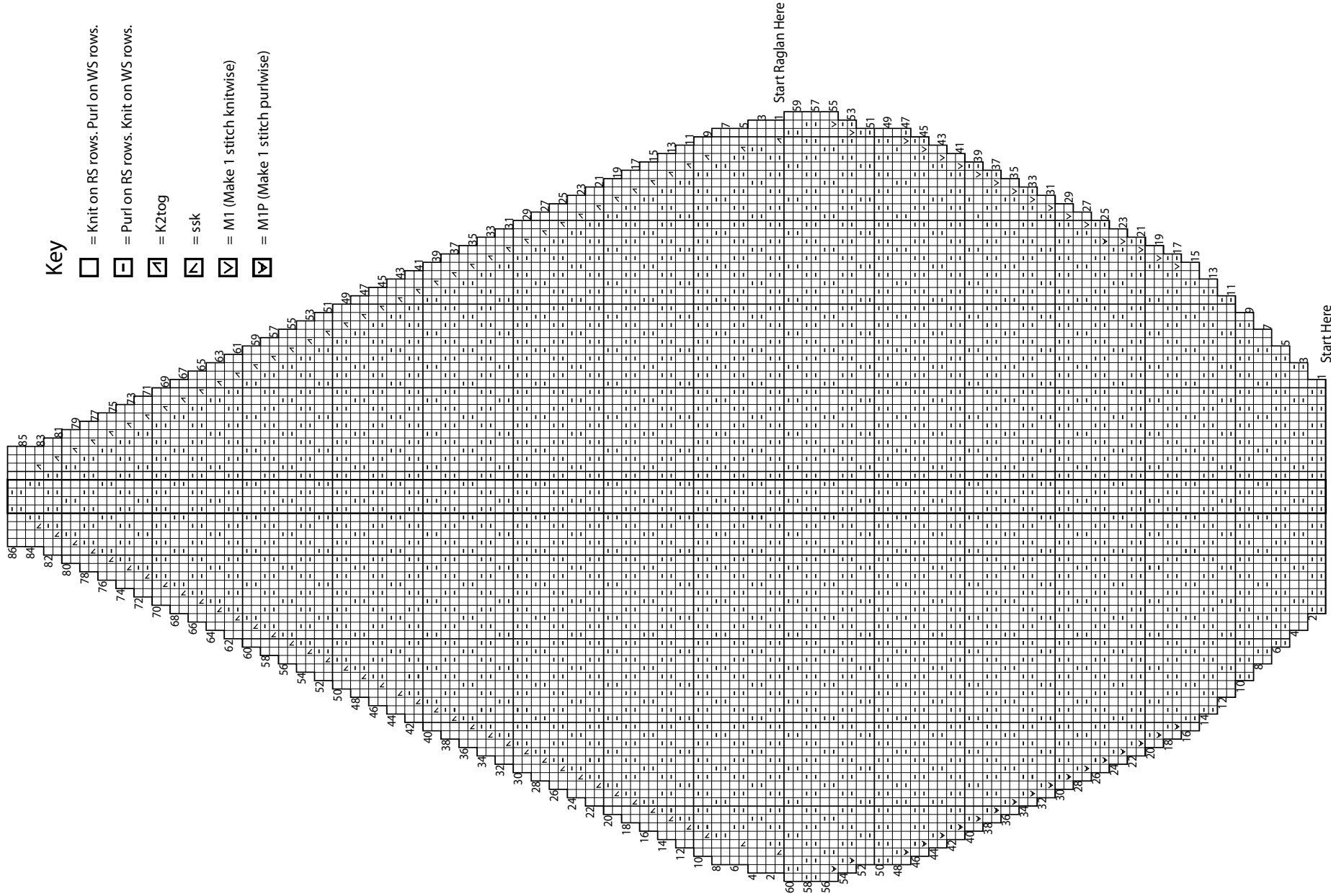








Chart I: Body



Key

-  = Knit on RS rows. Purl on WS rows.
-  = Purl on RS rows. Knit on WS rows.
-  = K2tog
-  = ssk
-  = M1 (Make 1 stitch knitwise)
-  = M1P (Make 1 stitch purlwise)

Start Here
Cast on **44 (52-60)** sts

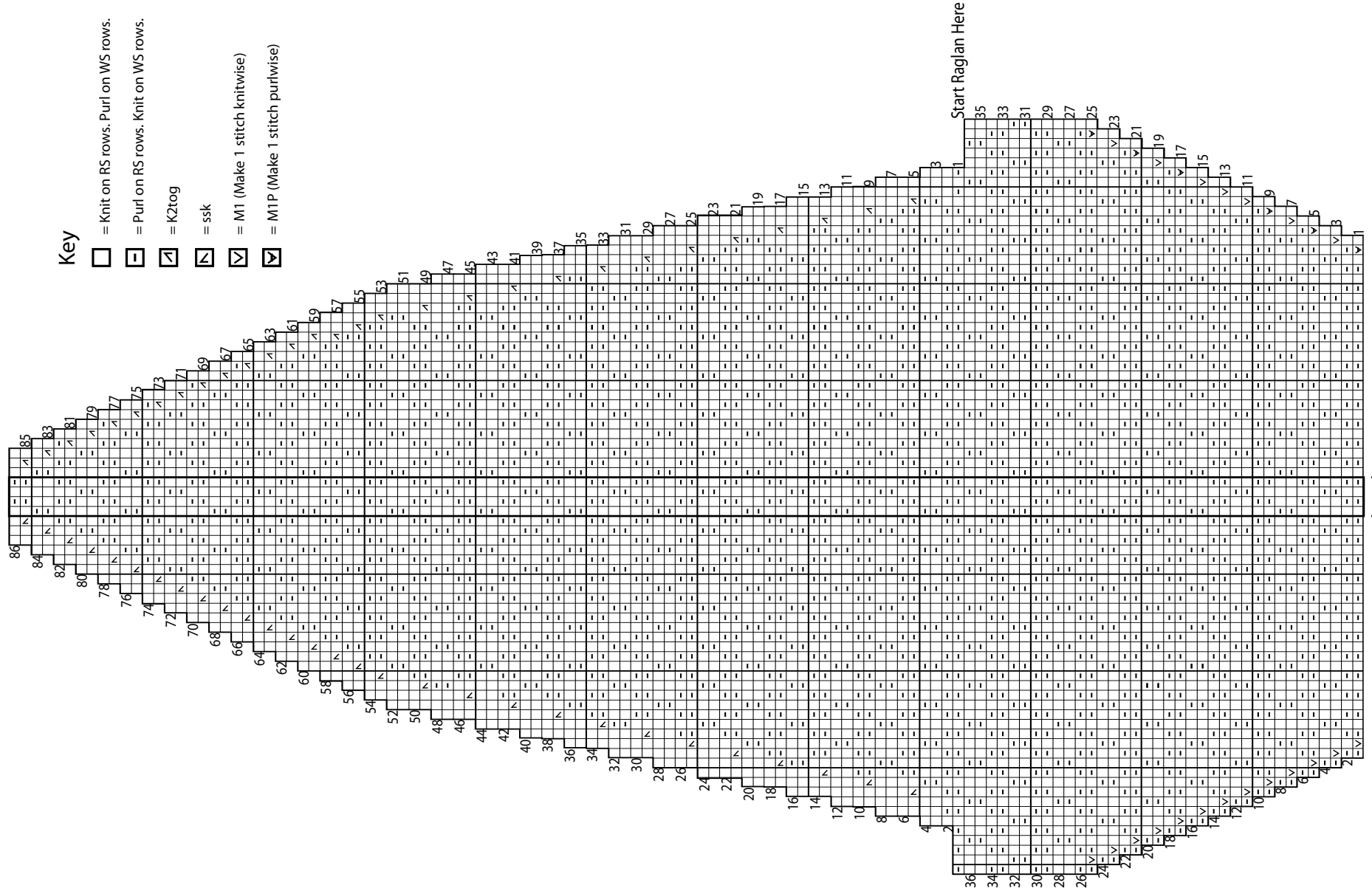
Work this 4-st rep **5 (7-9)** times

Start Here

Chart II (Sleeve)

Key

- = Knit on RS rows. Purl on WS rows.
- = Purl on RS rows. Knit on WS rows.
- = K2tog
- = ssk
- = M1 (Make 1 stitch knitwise)
- = M1P (Make 1 stitch purlwise)



Start Here

60 (60-68) sts.

Work this 4-st rep 3 (3-5) times