



CROCHET | SKILL LEVEL: **EASY**

## ABBREVIATIONS

**Approx** = Approximately

**Beg** = Beginning

**Ch** = Chain(s)

**Cont** = Continue(ity)

**Dc** = Double crochet

**Rep** = Repeat

**Rnd(s)** = Round(s)

**Sc** = Single crochet

**Sl st** = Slip stitch

**Sp** = Space

## MEASUREMENTS

Approx 40" x 45" [101.5 x 114.5 cm].

## GAUGE

13 sc and 16 rows = 4" [10 cm].

## INSTRUCTIONS

### Notes:

- Ch 3 at beg of rnds counts as dc throughout.
- Join all rnds with sl st to top of ch-3.

Ch 20. See diagram on page 2.

**1st rnd:** 2 dc in 4th ch from hook (counts as 3 dc). **\*\***(Ch 1. Skip next 3 ch. 3 dc in next ch) 3 times. Ch 1. Skip next 3 ch. **\*\*** [(3 dc. Ch 2) twice. 3 dc] in last ch. Working along opposite side of chain, rep from **\*\*** to **\*\*** once. (3 dc. Ch 2) twice in last ch. Join.

**2nd rnd:** Sl st in each of next 2 dc and next ch-1 sp. Ch 3. 2 dc in same sp as last sl st. (Ch 1. 3 dc in next ch-1 sp) 3 times. [Ch 1. (3 dc. Ch 2. 3 dc) in next ch-2 sp] twice. (Ch 1. 3 dc in next ch-1 sp) 4 times. [Ch 1. (3 dc. Ch 2. 3 dc) in next ch-2 sp] twice. Ch 1. Join.

**3rd rnd:** Sl st in each of next 2 dc and next ch-1 sp. Ch 3. 2 dc in same sp as last sl st. (Ch 1. 3 dc in next ch-1 sp) 3 times. Ch 1 (3 dc. Ch 2. 3 dc) in next ch-2 sp. Ch 1. 3 dc in next ch-1 sp. Ch 1. (3 dc. Ch 2. 3 dc) in next ch-2 sp. (Ch 1. 3 dc in next ch-1 sp) 5 times. [Ch 1. (3 dc. Ch 2. 3 dc) in next ch-2 sp.] twice. Ch 1. Join.

**4th rnd:** Sl st in each of next 2 dc and ch-1 sp. Ch 3. 2 dc in same sp as last sl st. (Ch 1. 3 dc in next ch-1 sp) 3 times. Ch 1. (3 dc. Ch 2. 3 dc)



## MATERIALS

**Red Heart® Fleece Hugs™** (7 oz/200 g; 415 yds/380 m)

Caribbean (7013)

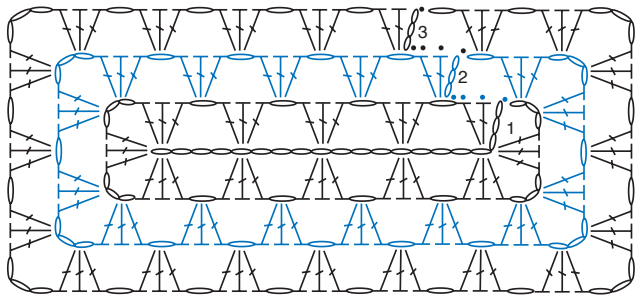
**2 balls**

Size U.S. 1/9 (5.5 mm) crochet hook **or size needed to obtain gauge.**  
Tapestry needle.

## RED HEART EASY-GO-ROUND CROCHET BLANKET

in next ch-2 sp. (Ch 1. 3 dc in next ch-2 sp) twice. Ch 1. (3 dc. Ch 2. 3 dc) in next ch-2 sp. (Ch 1. 3 dc in next ch-1 sp) 6 times. Ch 1. (3 dc. Ch 2. 3 dc) in next ch-2 sp. (Ch 1. 3 dc in next ch-2 sp) twice. Ch 1. (3 dc. Ch 2. 3 dc) in next ch-2 sp. (Ch 1. 3 dc in next ch-1 sp) twice. Ch 1. Join.

Cont as established, having (Ch 1. 3 dc) in each ch-1 sp and (3 dc. Ch 2. 3 dc) in each corner ch-2 sp until work measures approx 40" [101.5 cm] wide. Fasten off.



### KEY

- = chain (ch)
- = slip st (sl st)
- ⌞ = double crochet (dc)

