



## MATERIALS

Caron® Simply Soft® (6 oz/170.1 g; 288 m/315 yds)

**Contrast A** Ocean (39759)      **1**      **ball**

**Contrast B** Robin's Egg (39780)      **1**      **ball**

**Contrast C** Pumpkin (39765)      **1**      **ball**

Size U.S. H/8 (5 mm) crochet hook **or size needed to obtain gauge.**

## ABBREVIATIONS:

**Approx** = Approximate(ly)  
**Beg** = Begin(ing)  
**Ch** = Chain(s)  
**Cont** = Continue  
**Dec** = Decrease  
**Hdc** = Half double crochet  
**Pat** = Pattern  
**Rem** = Remain(ing)

**Rep** = Repeat  
**Rnd(s)** = Round(s)  
**RS** = Right side  
**Sc** = Single crochet  
**Sc2tog** = Draw up a loop in each of next 2 stitches. Yoh and draw through all loops on hook.

**Sl st** = Slip stitch  
**St(s)** = Stitch(es)  
**Tog** = Together  
**WS** = Wrong side  
**Yoh** = Yarn over hook

CROCHET | SKILL LEVEL: INTERMEDIATE

## SIZE

One size to fit average woman.

## GAUGE

13 sc and 14 rows = 4" [10 cm].

## INSTRUCTIONS

**Notes:** Ch 2 at beg of row does **not** count as hdc.

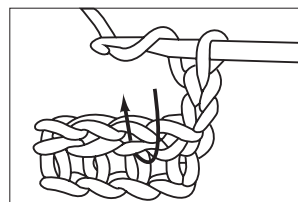
To change colors, work to last 2 loops on hook, yoh with new color through rem loops and proceed.

**Ribbing:** With A, ch 12.

**1st row:** 1 hdc in 3rd ch from hook. 1 hdc in each ch to end of chain. Turn. 10 hdc.

**2nd row:** Ch 2. Work 1 hdc in horizontal bar created below st in previous row (bar is below loops normally worked on WS – see diagram) in each hdc to end of row. Turn.

## Hdc in horizontal bar

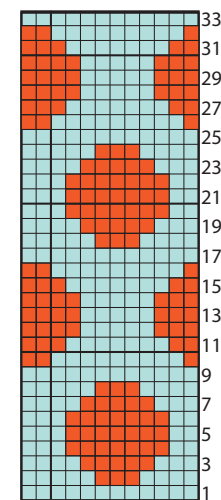


Rep last row until Ribbing measures approx 21" [53.5 cm] long when slightly stretched, ending on a WS row. Fasten off, leaving a long end. Sew foundation row and last row tog to form ribbing.

**Hat:** With RS facing, join A with sl st to center back seam. Ch 1. Work 72 sc evenly around side edge of Ribbing. Join B with sl st to first sc.

**Next rnd:** With B, ch 1. 1 sc in each sc around. Join with sl st to first sc.

**Note:** Chart section of Hat is worked in rnds, but turning work at end of each rnd to alternate RS and WS. Carry color when not in use across top of rnd and work sts around it.



Start here

Beg working Chart:

**1st rnd:** Ch 1. Work 1st row of Chart, reading chart from **right** to left, noting 12 st rep will be worked 6 times. Join with sl st to first sc. **Turn.**

**2nd rnd:** (WS). Ch 1. Work 2nd row of Chart, reading chart from **left** to right, noting 12 st rep will be worked 6 times. Join with sl st to first sc. **Turn.**

First 2 rows of Chart are complete.

Cont working in Chart pat, turning work at end of each rnd until 33 rows of Chart are complete. Break C.

With B only, proceed as follows:

**Shape top: 1st rnd:** Ch 1. \*1 sc in each of next 7 sc. Sc2tog. Rep from \* around. Join with sl st to first sc. 64 sts.

**2nd rnd:** Ch 1. 1 sc in each st around. Join with sl st to first sc.

**3rd rnd:** Ch 1. \*1 sc in each of next 6 sc. Sc2tog. Rep from \* around. Join with sl st to first sc. 56 sts.

**4th rnd:** As 2nd rnd.

**5th rnd:** Ch 1. \*1 sc in each of next 5 sc. Sc2tog. Rep from \* around. Join with sl st to first sc. 48 sts.

**6th rnd:** Ch 1. \*1 sc in each of next 4 sc. Sc2tog. Rep from \* around. Join with sl st to first sc. 40 sts.

**7th rnd:** Ch 1. \*1 sc in each of next 3 sc. Sc2tog. Rep from \* around. Join with sl st to first sc. 32 sts.

**8th rnd:** Ch 1. \*1 sc in each of next 2 sc. Sc2tog. Rep from \* around. Join with sl st to first sc. 24 sts.

**9th rnd:** Ch 1. \*1 sc in next sc. Sc2tog. Rep from \* around. Join with sl st to first sc. 16 sts.

**10th rnd:** Ch 1. \*Sc2tog. Rep from \* around. Join with sl st to first st. 8 sts. Fasten off, leaving a long end. Thread end through rem sts and pull up tightly. Fasten securely.

### Pompom:

Wind C around 4 fingers 150 times. Remove from fingers and tie tightly in the middle and leave long end for attaching to Hat. Cut loops at both ends and trim to a smooth round shape. Sew securely to top of Hat.

### Pompom Diagram

