



MATERIALS

Caron® One Pound™ (16 oz/453.6 g; 812 yds/742 m)

Hosta (10638) or Soft Sage (10580) **2 balls or 1815 yds/1650 m**

Size U.S. 10½ (6.5 mm) Susan Bates® circular knitting needle 36" [91.5 cm] long **or size needed to obtain gauge.** Susan Bates® yarn needle.



KNIT 1 SKILL LEVEL: **INTERMEDIATE**

ABBREVIATIONS

Approx = Approximate(ly)

Beg = Begin(ning)

Cont = Continue

K = Knit

Kfb = Increase 1 stitch by knitting into front and back of next stitch

K2tog = Knit next 2 stitches together

P = Purl

P2tog = Purl next 2 stitches together

P2togtbl = Purl next 2 stitches together through back loops

Pat = Pattern

Rep = Repeat

Ssk = Slip next 2 stitches knitwise one at a time. Pass them back

onto left-hand needle, then knit through back loops together

St(s) = Stitch(es)

WS = Wrong side

Yo = Yarn over

MEASUREMENTS

Approx 54" x 60" [137 x 152.5 cm].

GAUGE

14 sts and 18 rows = 4" [10 cm] in stocking st.

INSTRUCTIONS

Cast on 180 sts. **Do not** join. Working back and forth across needle in rows, proceed as follows:

Top Border

1st row: (RS). *K1. P1. Rep from * to end of row.

2nd row: *P1. K1. Rep from * to end of row.

Rep last 2 rows of Seed St Pat 3 times more, then rep 1st row once.

Next row: (WS). (P1. K1) 6 times. *P1. Kfb. (P1. K1) 5 times. Rep from * to end of row. 194 sts.

Proceed in Leaf Pat as follows: (see Chart on page 2)

Multiple of 15 + 14 sts.

1st row: (RS). (K1. P1) 3 times. P2. *K13. P2. Rep from * to last 6 sts. (K1. P1) 3 times.

2nd row: (P1. K1) 3 times. K2. *P13. K2. Rep from * to last 6 sts. (P1. K1) 3 times.

3rd row: (K1. P1) 3 times. P2. *K10. K2tog. yo. K1. P2. Rep from * to last 6 sts. (K1. P1) 3 times.

4th row: (P1. K1) 3 times. K2. *yo. P2. P2tog. P9. K2. Rep from * to last 6 sts. (P1. K1) 3 times.

5th row: (K1. P1) 3 times. P2. *K8. K2tog. K1. yo. K2. P2. Rep from * to last 6 sts. (K1. P1) 3 times.

6th row: (P1. K1) 3 times. K2. *P1. yo. P3. P2tog. P7. K2. Rep from * to last 6 sts. (P1. K1) 3 times.

7th row: (K1. P1) 3 times. P2. *K6. K2tog. K2. yo. K3. P2. Rep from * to last 6 sts. (K1. P1) 3 times.

8th row: (P1. K1) 3 times. K2. *P2. yo. P4. P2tog. P5. K2. Rep from * to last 6 sts. (P1. K1) 3 times.

9th row: (K1. P1) 3 times. P2. *K4. K2tog. K3. yo. K4. P2. Rep from * to last 6 sts. (K1. P1) 3 times.

10th row: (P1. K1) 3 times. K2. *P3. yo. P5. P2tog. P3. K2. Rep from * to last 6 sts. (P1. K1) 3 times.

11th row: (K1. P1) 3 times. P2. *K13. P2. Rep from * to last 6 sts. (K1. P1) 3 times.

12th row: (P1. K1) 3 times. K2. *P13. K2. Rep from * to last 6 sts. (P1. K1) 3 times.

13th row: (K1. P1) 3 times. P2. *K1. yo. ssk. K10. P2. Rep from * to last 6 sts. (K1. P1) 3 times.

14th row: (P1. K1) 3 times. K2. *P9. P2togtbl. P2. yo. K2. Rep from * to last 6 sts. (P1. K1) 3 times.

15th row: (K1. P1) 3 times. P2. *K2. yo. K1. ssk. K8. P2. Rep from * to last 6 sts. (K1. P1) 3 times.

16th row: (P1. K1) 3 times. K2. *P7. P2togtbl. P3. yo. P1. K2. Rep from * to last 6 sts. (P1. K1) 3 times.

17th row: (K1. P1) 3 times. P2. *K3. yo. K2. ssk. K6. P2. Rep from * to last 6 sts. (K1. P1) 3 times.

18th row: (P1. K1) 3 times. K2. *P5. P2togtbl. P4. yo. P2. K2. Rep from * to last 6 sts. (P1. K1) 3 times.

19th row: (K1. P1) 3 times. P2. *K4. yo. K3. ssk. K4. P2. Rep from * to last 6 sts. (K1. P1) 3 times.

20th row: (P1. K1) 3 times. K2. *P3. P2togtbl. P5. yo. P3. K2. Rep from * to last 6 sts. (P1. K1) 3 times.

These 20 rows form Leaf Pat. Cont in Leaf Pat until work from beg measures approx 58" [147.5 cm], ending on a 2nd or 12th row.

Next row: (K1. P1) 6 times. *K2tog. P1. (K1. P1) 5 times. Rep from * to end of row. 180 sts.

Bottom Border

1st row: *P1. K1. Rep from * to end of row.

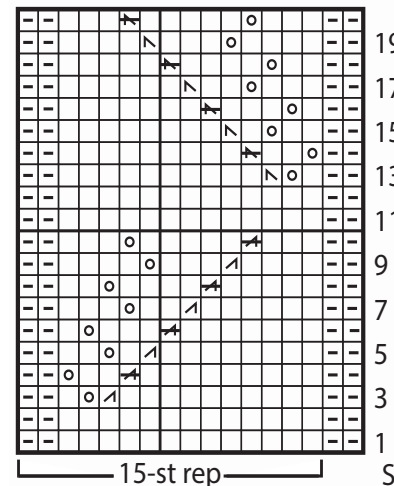
2nd row: *K1. P1. Rep from * to end of row.

Rep last 2 rows of Seed St Pat 3 times more.

Cast off in pat.



Leaf Pat Chart



Key

- = Knit on RS rows; Purl on WS rows
- ◻ = Purl on RS rows; Knit on WS rows.
- = yo
- ⊠ = K2tog
- ⊞ = P2tog
- ⊟ = ssk
- ⊠ = P2togtbl