



Patons®
Canadiana

Patons®
DECOR

COUNTING SHEEP BLANKET

MEASUREMENT

Approx 38 x 44 ins [96.5 x 112 cm]

MATERIALS

Patons Canadiana (100 g/3.5 oz)
or **Patons Décor** (100 g/3.5 oz)

Main Color (MC) (Blue) 4 balls
Contrast A (White) 1 ball
Contrast B (Yellow) 1 ball
Contrast C (Navy) 2 balls

Size 4.5 mm (U.S. 7) circular knitting
needle 36 ins [90 cm] long and pair of
size 4.5 mm (U.S. 7) knitting needles
or size needed to obtain tension.

TENSION

20 sts and 26 rows = 4 ins [10 cm] in
stocking st.

INSTRUCTIONS

Note: When working from Charts I, II and III, wind small balls of the colors to be used, one for each separate area of color in the design. Start new colors at appropriate points. To change colors, twist the two colors around each other where they meet, on WS, to avoid a hole. Small areas of color in charts may be worked using duplicate stitch if desired.

When working from Chart IV, carry colors not in use loosely across WS of work.

CENTER SECTION STRIP A

With MC, cast on 35 sts.

Work Chart II in stocking st to end of chart reading **knit** rows from **right** to left and **purl** rows from **left** to right, dec 1 st in center of last row. 34 sts.

Proceed in box st pat as follows:

1st row: (RS). With MC, *K2. P2. Rep from * to last 2 sts. K2.

2nd row: *P2. K2. Rep from * to last 2 sts. P2.

3rd row: *P2. K2. Rep from * to last 2 sts. P2.

4th row: *K2. P2. Rep from * to last 2 sts. K2.

These 4 rows form box st pat.

Work a further 34 rows in box st pat, inc 1 st in center of last row. 35 sts.

Work Chart III in stocking st to end of chart reading **knit** rows from **right** to left and **purl** rows from **left** to right, dec 1 st in center of last row. 34 sts.

Work 38 rows in box st pat.

Cast off in pat.

CENTER SECTION STRIP B

With MC, cast on 34 sts.

Proceed in box st pat as given for Center Strip A for 38 rows, inc 1 st in center of last row. 35 sts.

Work Chart III in stocking st to end of chart reading **knit** rows from **right** to left and **purl** rows from **left** to right, dec 1 st in center of last row. 34 sts.

Work 38 rows in box st pat, inc 1 st in center of last row. 35 sts.



ABBREVIATIONS: www.patonsyarns.com/glossary

Work Chart II in stocking st to end of chart reading **knit** rows from **right** to left and **purl** rows from **left** to right. Cast off.

Sew Strip A and Strip B tog.

Center Section Top or Bottom Edging: With RS of work facing and C, pick up and knit 67 sts across top or bottom of Center Section. Work 5 rows garter st (knit every row). Cast off knitwise.

Center Section Side Edging: With RS of work facing and C, pick up and knit 123 sts along each side edge of Center Section (including sides of Top and Bottom Edging). Work 5 rows garter st. Cast off knitwise.

SHEEP BORDER

With C and circular needle, cast on 141 sts. **Do not join.** Working back and forth across needle in rows, proceed as follows:

Work 6 rows garter st, inc 6 sts evenly across last row. 147 sts. Break C.

Work Chart I in stocking st until row 38 of chart is complete, reading **knit** rows from **right** to left and **purl** rows from **left** to right.

Next row: (RS). Work Chart I across 37 sts. Cast off center 73 sts. Work Chart I to end of row.

Working each side separately, cont working Chart I until row 198 of chart is complete.

Next row: (RS). Work Chart I across 37 sts. Cast on 73 sts. Work Chart I to end of chart. 147 sts.

Cont working Chart I to end of chart.

Next row: (RS). With C, knit dec 6 sts evenly across. 141 sts.

Work a further 5 rows garter st. Cast off knitwise.

Side Edging: With RS of work facing, circular needle and C, pick up and knit 183 sts evenly along each side edge of Sheep Border.

Work 5 rows garter st. Cast off knitwise.

Sew Center Section into center of Sheep Border, as illustrated.

Top or Bottom Check Edging: With RS of work facing, MC and circular needle, pick up and knit 154 sts across top or bottom of Blanket.

Work Chart IV in stocking st to end of chart reading **purl** rows from **right** to left and **knit** rows from **left** to right, noting 4 st rep will be worked 38 times. With MC, cast off purlwise (WS).

Side Check Edging: With RS of work facing, MC and circular needle, pick up and knit 206 sts along each side of Blanket.

Work Chart IV in stocking st to end of chart reading **purl** rows from **right** to left and **knit** rows from **left** to right, noting 4 st rep will be worked 51 times.

Next row: (WS). With MC, purl, dec 11 sts evenly across. 195 sts.

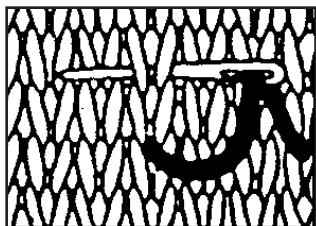
With C, work 5 rows garter st. Cast off knitwise (WS).

Top or Bottom Final Garter Edging:

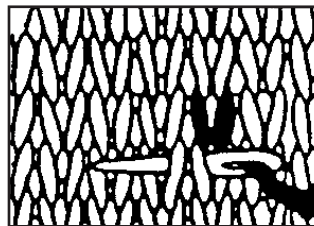
With RS of work facing, C and circular needle, pick up and knit 173 sts across top or bottom of Blanket.

Work 6 rows garter st. Cast off knitwise (WS).

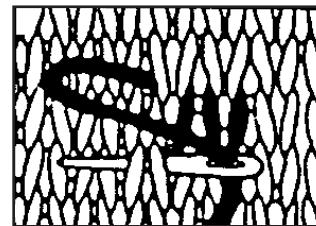
DUPLICATE STITCH



Bring needle up through centre of stitch from back of work and * insert from right to left behind stitch immediately above.



Bring needle down through center of original stitch and out through center of next stitch to be worked.



Repeat from * to continue.

CHART I

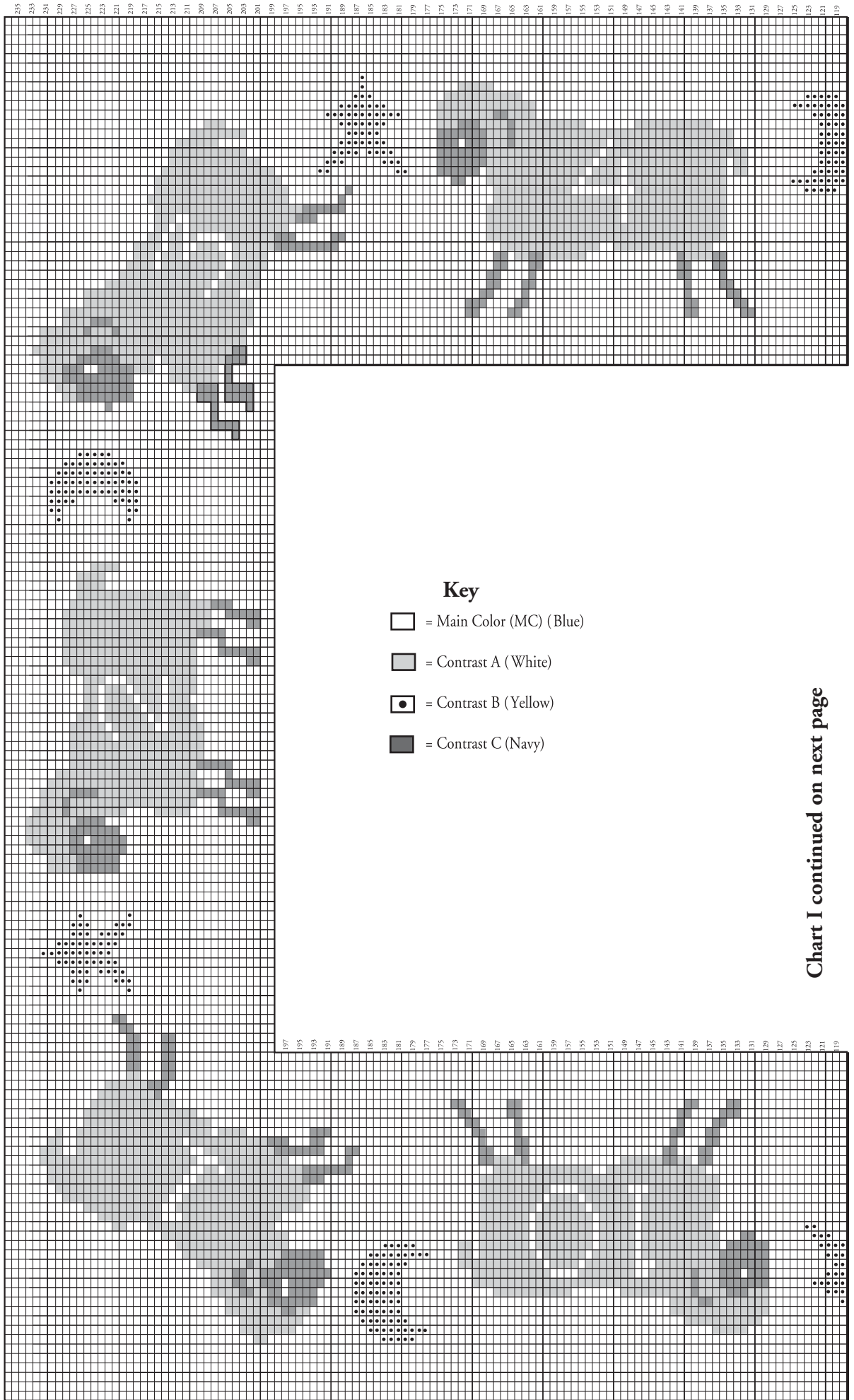
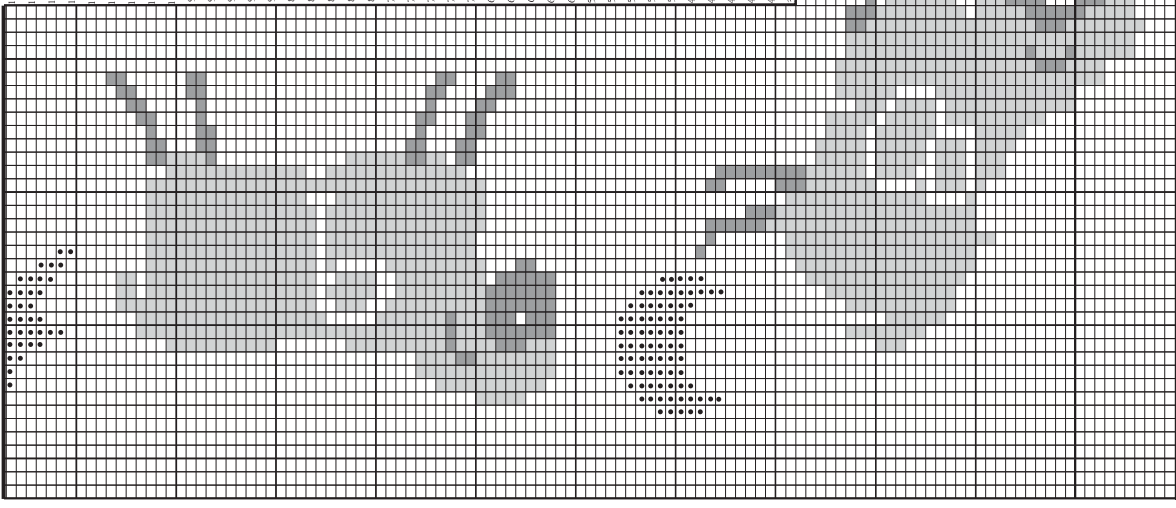
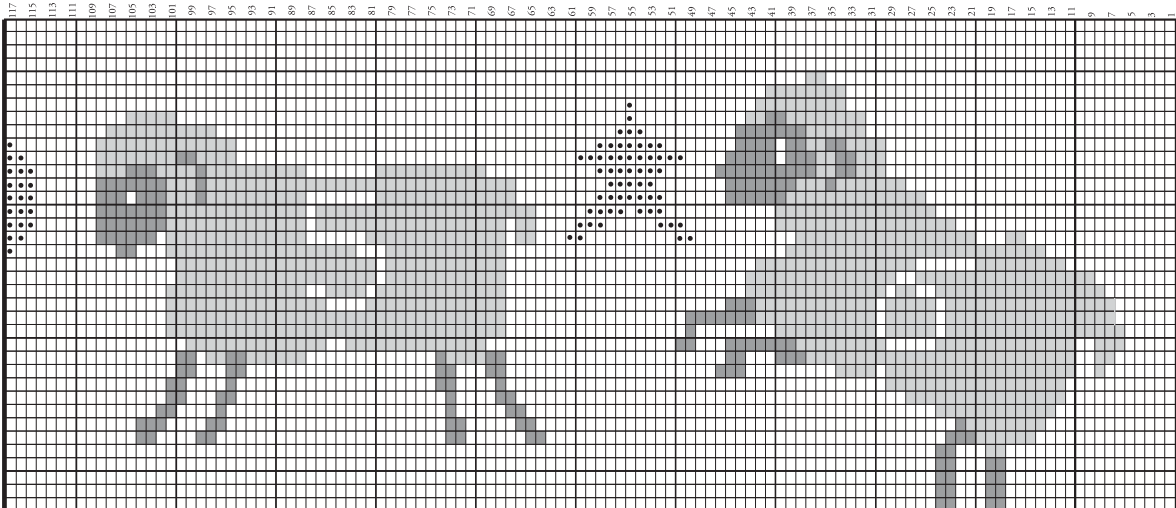


Chart I continued on next page



Start Here

CHART II

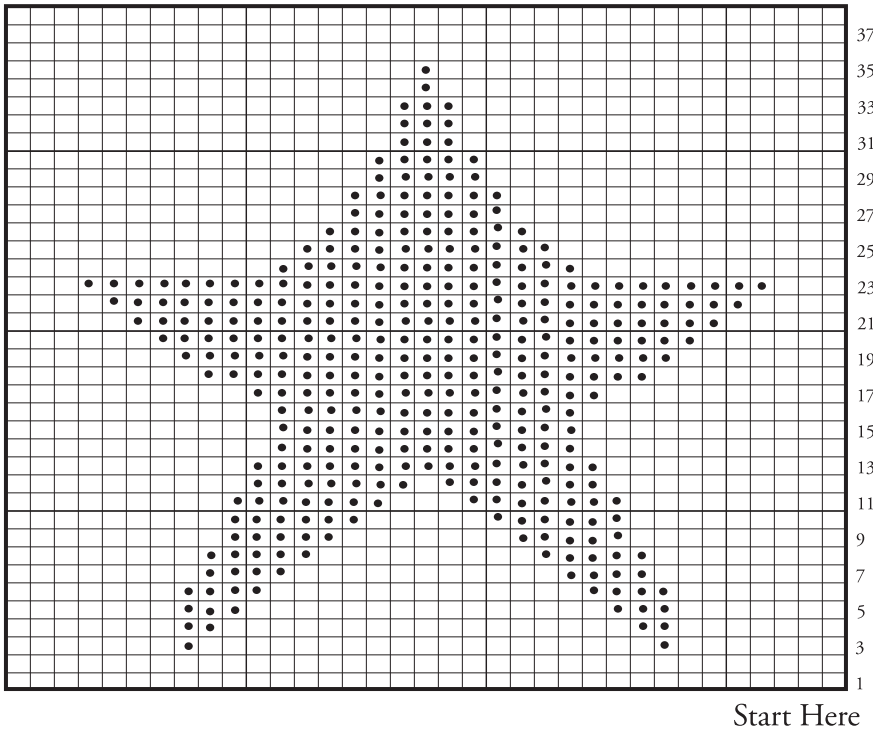
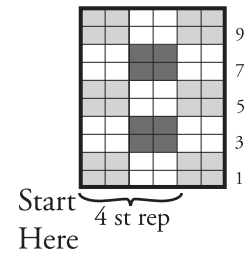


CHART IV



Key





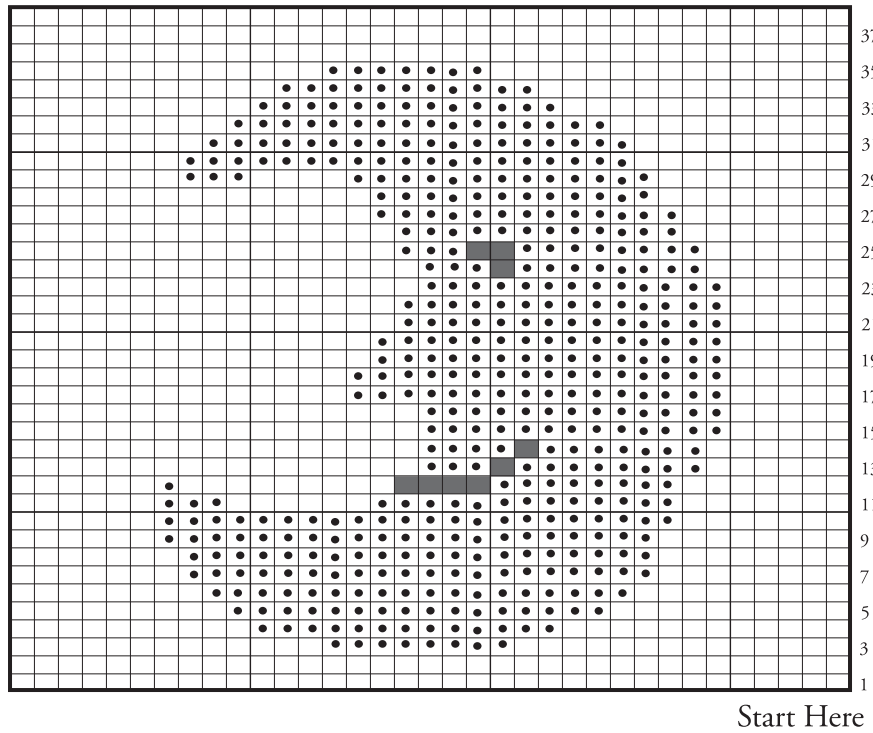
-  = Main Color (MC) (Blue)
-  = Contrast A (White)
-  = Contrast B (Yellow)
-  = Contrast C (Navy)

CHART III



 Patons

... a part of your life.

P.O. Box 40, Listowel ON N4W 3H3